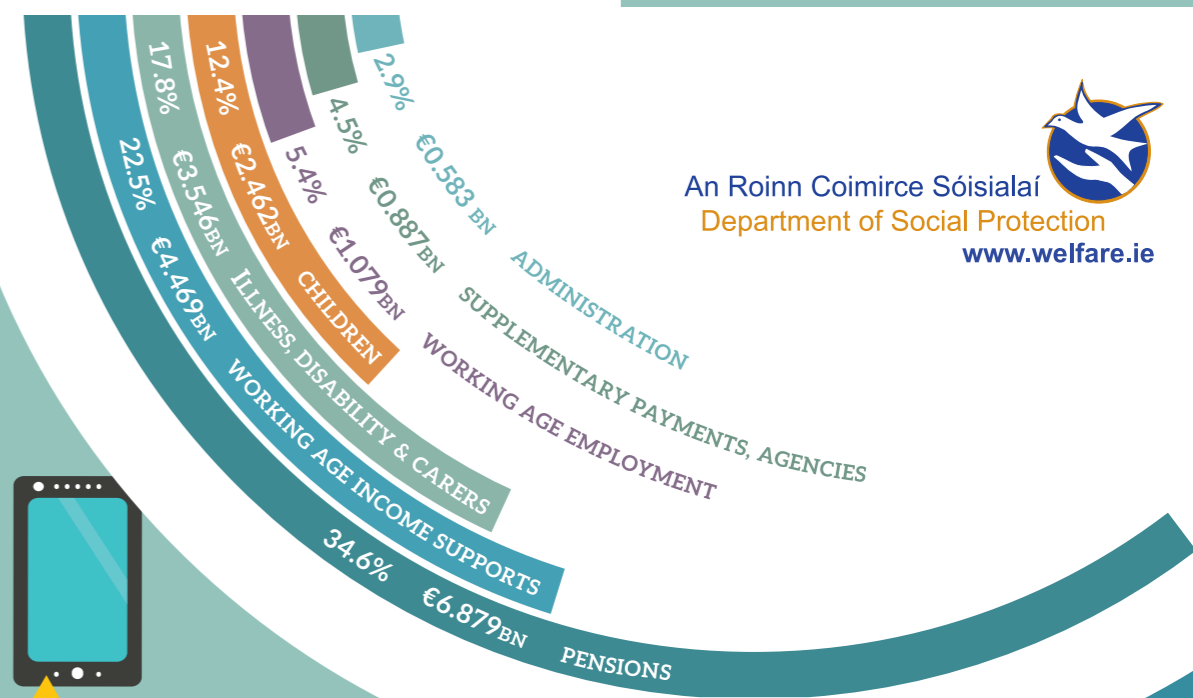


2015 IN REVIEW



An Roinn Coimirce Sóisialaí
Department of Social Protection
www.welfare.ie

EXPENDITURE



WWW.MYWELFARE.IE

allows customers to do their business with the Department on-line

GOING DIGITAL

LAUNCH OF
www.mygovoid.ie
an online system to access public services digitally



124,000 JOB VACANCIES and 16,000 JobBridge positions advertised on www.jobsireland.ie

€19.9 Billion total expenditure (provisional outturn)

Publication of the **Statement of Strategy 2015 - 2017**

Access to payment information by other agencies including **SUSI**

Working with multiple delivery partners including An Post, Banks & the Revenue Commissioners



NEW PAYMENT FUNCTION

Payments can be generated and issued on behalf of other agencies

INTER AGENCY COLLABORATION

SUPPORTS FOR INDIVIDUALS & FAMILIES

Enactment of **GENDER RECOGNITION** legislation



Increase of **€325** in the Carer's Support Grant bringing it to **€1,700**



SUPPORTS FOR OLDER PEOPLE & PEOPLE WITH A DISABILITY / ILLNESS

1.7m applications processed



Payments of **€530,000** to **450 HOUSEHOLDS** whose homes were damaged by severe weather



Funding was increased to **€42m** from €40m, supporting **217,000 children**



2 Week Paternity Benefit scheme to be introduced in September 2016



Over **1.1 MILLION** control reviews yielding control **savings of €69 million**

170,000 PPS Numbers allocated to clients from over **180 countries**



630,000 Public Service Cards issued, bringing total cards issued to 1.75 million



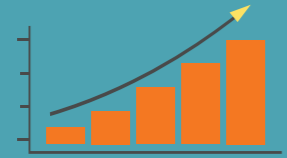
887,000 APPLICATIONS processed through the Water Conservation Grant on-line application system



on behalf of the Department of the Environment, Community and Local Government

EMPLOYMENT

Increase of **150,000** people at work since 2012



82.2 MILLION scheme payments made

8.3 Million telephone calls answered

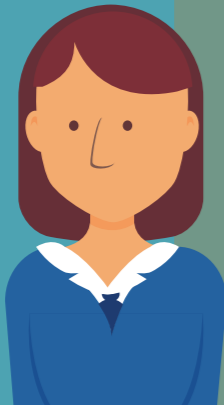
25,400 social welfare appeals finalised



JobPath **7,500 people** were assisted in securing and sustaining full-time paid employment



There were almost **11,000** recipients of the **Back to Work Family Dividend**



Increase of **9%** in the number of **Family Income Supplement** recipients to 55,000 at a cost of **€349 million**

Launch of a Comprehensive **Employment Strategy** for people with disabilities



The information contained in this infographic is correct at the time of publication.